

What is SlabTek™?

SlabTek™ is a new foundation design method which combines the construction ease of a slab-on-grade foundation with the performance of an elevated slab. This is accomplished by constructing the foundation on grade, then lifting it, resulting in a void between the foundation and soil. Also, SlabTek™ utilizes profiled post-tensioned strands, eliminating the need for interior beams. This profiled strand design has traditionally been utilized in commercial structures such as parking garages, bridges, and multi-story office buildings.

What are the benefits of SlabTek™?

An important benefit of SlabTek™ is reduced risk of foundation movement. Since the slab portion of the foundation is not supported by or in contact with the soil, it is not affected by soil shrinkage or swelling resulting from seasonal moisture change. This isolation is also accomplished by an elevated/structural slab or pier and beam foundation system. However, SlabTek™ offers the risk reduction without the hassle of void cartons or a sometimes undesirable wood floor system. Also, a SlabTek™ foundation is more economical to construct than an elevated slab or pier and beam foundation; the cost is comparable to a post-tension/rebar slab-on-grade foundation with piers.

How do I obtain a SlabTek™ foundation design?

Paragon Structural Engineering is certified to design these types of foundations and can provide SlabTek™ construction training for your concrete contractor(s). Refer to our design and inspection fee schedule for pricing of engineering related services. Refer to SlabTek™ (www.slabtek.com) for lifting mechanism information and pricing.

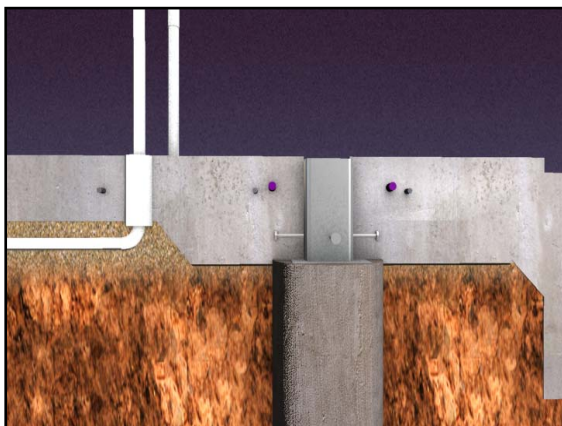


Figure 1 - Foundation Construction Pre-Lift

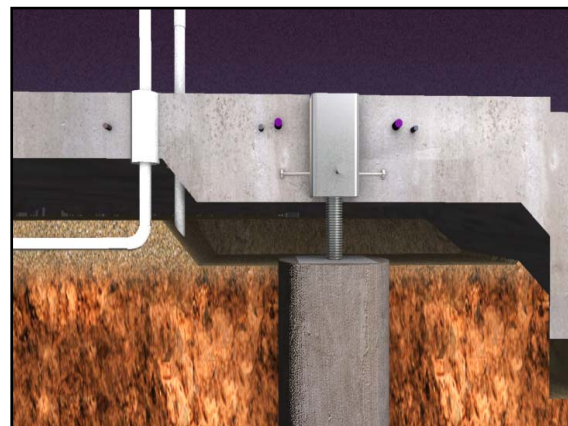


Figure 2 - Foundation Construction Post-Lift